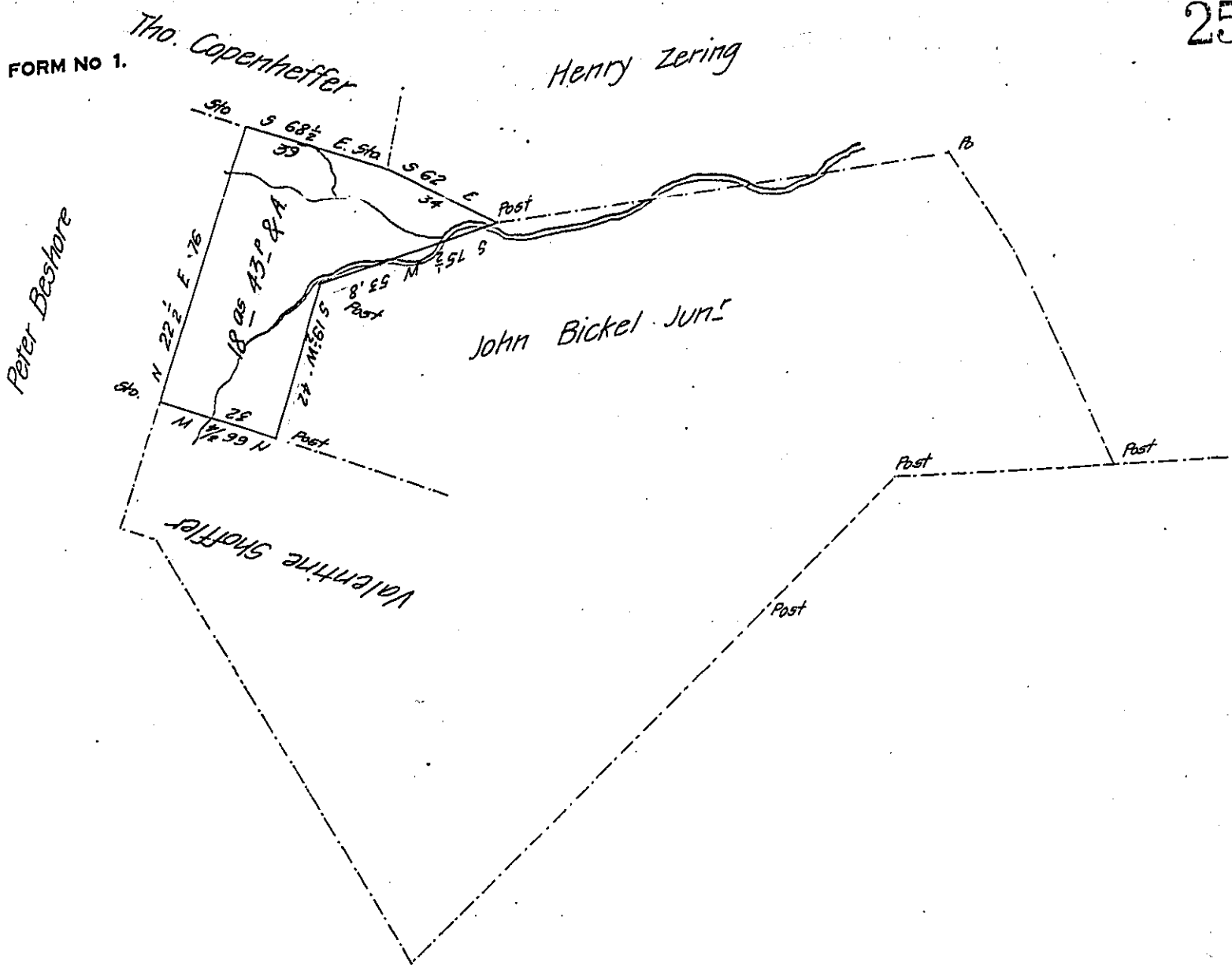


FORM No 1.



Surveyed July 12<sup>th</sup> 1816 for Peter Stroh the above described tract of land situate in East Hanover Township Lebanon County Containing eighteen acres forty three perches with allowance part of 193 acs 150 per on application of Jacob Beshore No 1661 dated 25<sup>th</sup> June 1766

Thomas Smith D.S.

To Richard T. Leech Esq.  
Surveyor General.

IN TESTIMONY that the above is a copy of the original remaining on file in the Department of Internal Affairs of Pennsylvania, made conformably to an Act of Assembly approved the 16th day of February, 1833, I have hereunto set my Hand and caused the Seal of said Department to be affixed at Harrisburg, this nineteenth day of May 1908

*Henry Houder*  
Secretary of Internal Affairs.